

# Alaska Department of Fish and Game

Habitat Section  
Southeast Region



**110-16-10040-2004**

**ADDITION**

**Water body name:**

**Quad:** Petersburg D-4

**Upper Reach Latitude:** 56.934510 **Longitude:** -133.317352

**Lower Reach Latitude:** 56.935051 **Longitude:** -133.311239

**Survey date:** 8/23/2023

**Species & Lifestage:** COp

**Survey crew:** NJ, EK

**Findings:** We surveyed this cataloged stream using a backpack electrofisher and GPS and captured juvenile coho salmon and Dolly Varden (Figure 1). The stream was forested and low gradient throughout the surveyed area and the substrate was small gravel (Table 1; Figures 2, 3). The survey ended due to time constraints; fish habitat may continue.

**Recommendations:** Extend upper extent of Stream No. 110-16-10040-2004 in the anadromous waters catalog and add rearing coho salmon to species (Figure 4).

**Nomination:** Pending

Table 1.—110-16-10040-2004 survey data.

Waypoint	Latitude	Longitude	Notes	Stream Width ft	Stream Substrate	Habitat Features	Gradient %	Sample Effort	Sample Results
687	56.934504	-133.317320						EF	2 CO
694	56.934424	-133.316894	Minnow trap upstream of culvert on river right in pool. 3.5 hour soak. AWC line already through culvert, but wanted to confirm fish passage since we had extra traps anyway.	6-8	Small Gravel		0-1		2 CO 6 DV



Figure 1.—Juvenile coho salmon captured at waypoint 694.



Figure 2.—Stream No. 110-16-10040-2004 at waypoint 694.



Figure 3.— Stream No. 110-16-10040-2004 at waypoint 687.

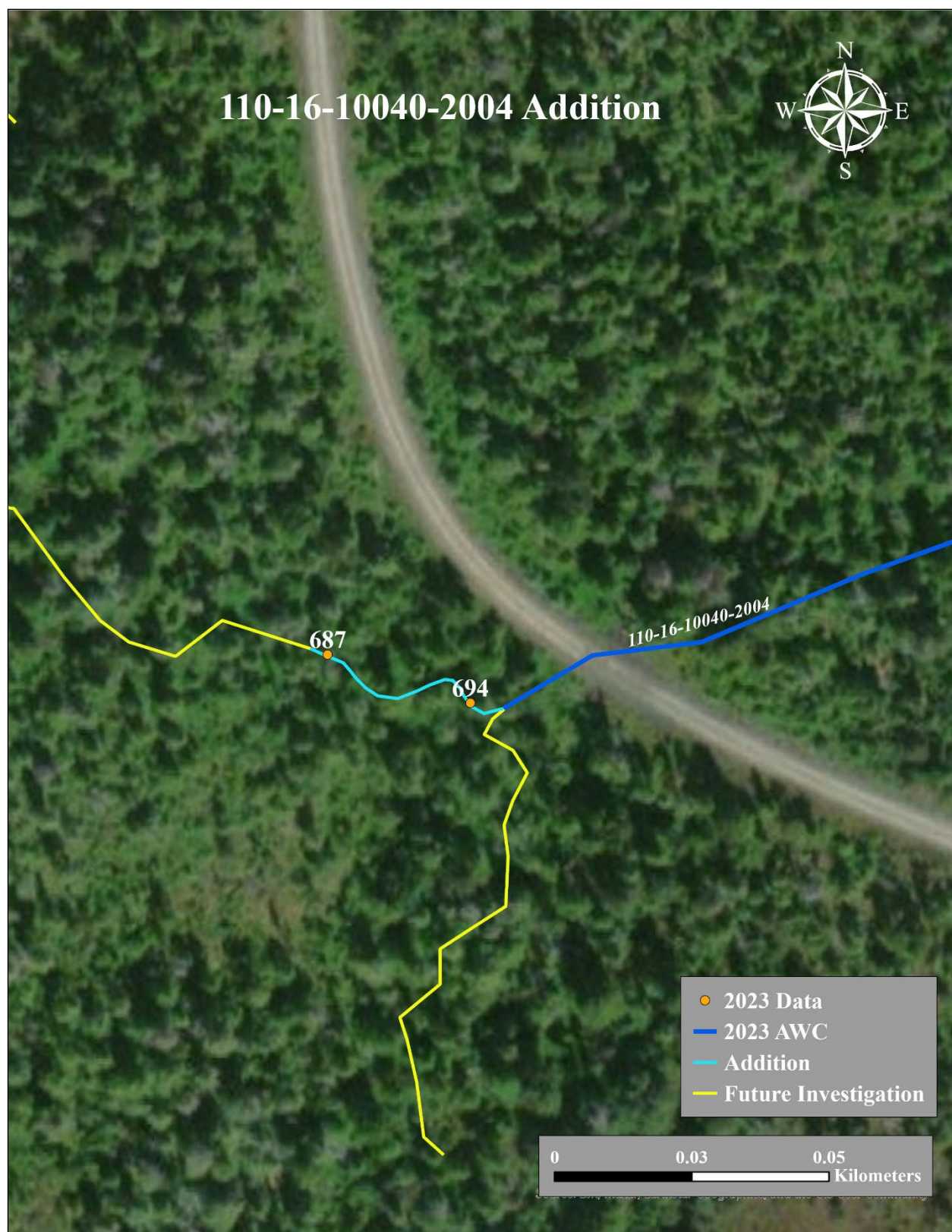


Figure 4.—Stream No. 110-16-10040-2004 addition map.